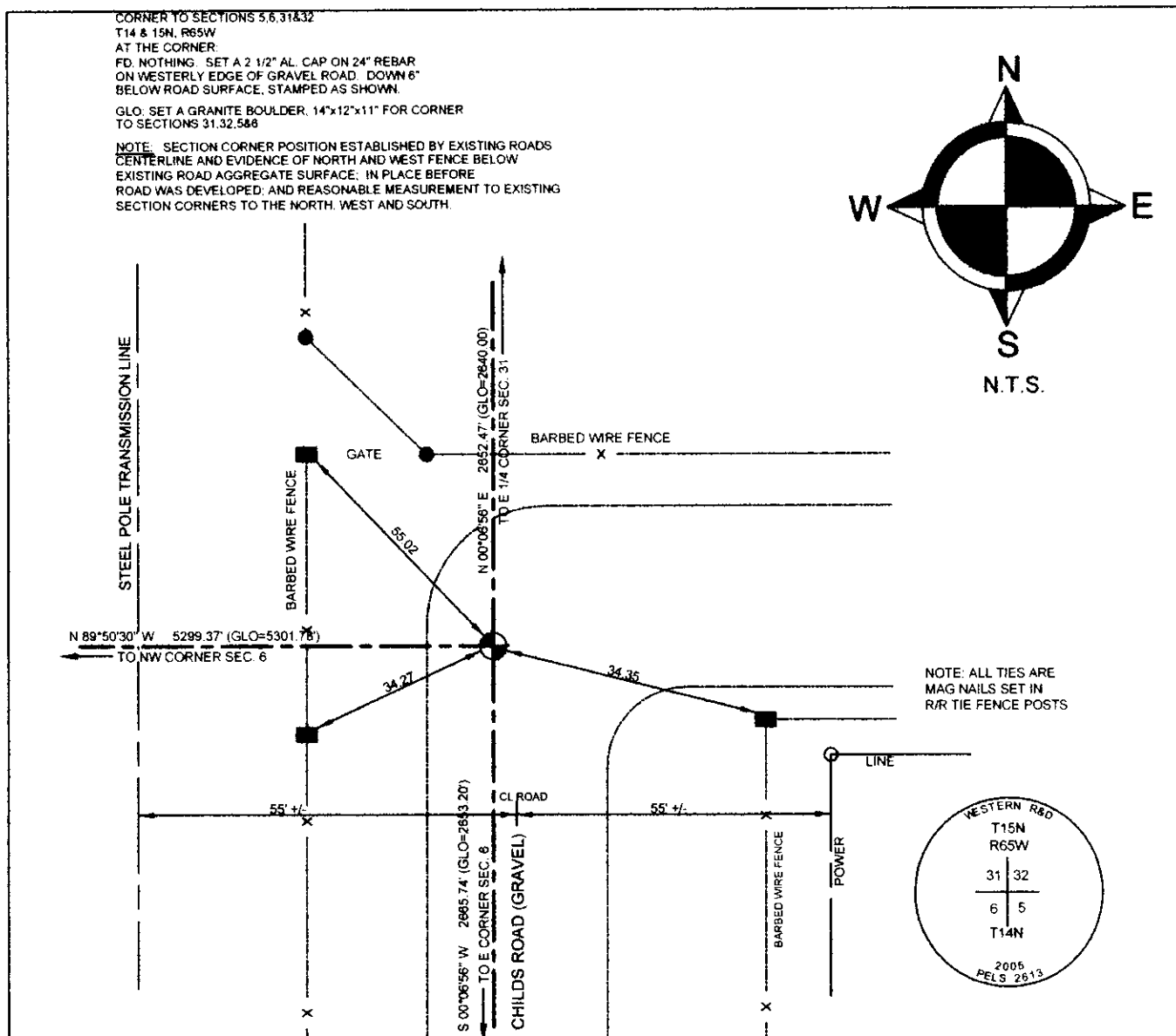


State of Wyoming Corner Record

(In compliance with the CORNER PERPETUATION AND FILING ACT, Wyoming Statutes, 1997, Section 33-29-140 et. seq., and the Rules and Regulations of the Board of Registration for Professional Engineers and Professional Land Surveyors)

Reverse side of this form may be used if more space is needed.

Record of original survey and citation of source of historical information (if corner is lost or obliterated). Description of corner monumentation evidence found and/or monument and accessories established to perpetuate the location of this corner. Sketch of relative location of monument, accessories, and reference points with course and distance to adjacent corner(s) (if determined in this survey). Method and rationale for reestablishment of lost or obliterated corner.



Date of Field Work: 10/5/04 Office Reference: _____

CROSS INDEX DIAGRAM

1	2	3	4	5	6	7	8	9	10	11	12	13	14	15	16	17	18	19	20	21	22	23	24	25	
A																									
B																									
C	6		5		4		3		2		1														
D																									
E																									
F																									
G	7		8		9		10		11		12														
H																									
J																									
K																									
L	13		17		16		15		14		13														
M																									
N																									
O																									
P	19		20		21		22		23		24														
Q																									
R																									
S																									
T	30		29		28		27		26		25														
U																									
V																									
W																									
X	31		32		33		34		35		36														
Y																									
Z																									

Firm/Agency, Address

Roger H. Krum, PE & PLS2613
Western R & D, Ltd.
5908 Yellowstone Rd Suite B
Cheyenne, Wyoming 82001

Telephone Number: 307 632 5656

This corner record was prepared by me or under my direction and supervision.
SEAL & SIGNATURE



Corner Name: NORTHEAST SECTION CORNER

Section: 6 T14N R65W; 6th P.M. Cross-Index No.: A-5